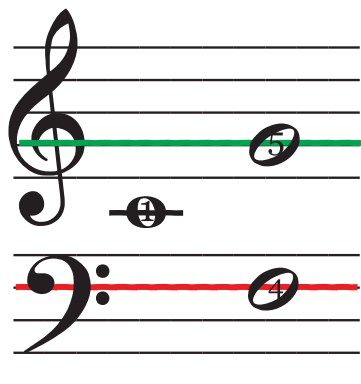


THE CLEFS

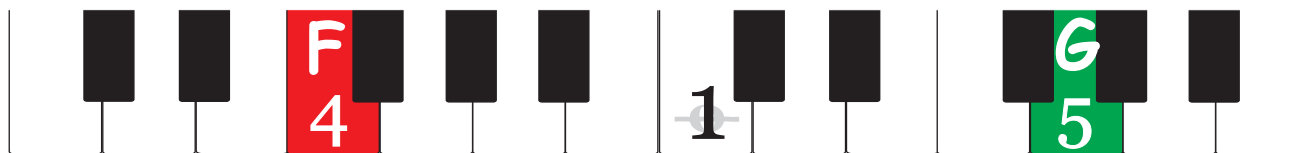
A clef is placed in the beginning of each musical staff. Without a clef, a note on the staff has no meaning.



The Treble Clef is also known as the **G clef** as it shows where treble G is **above middle C**. Treble G is drawn on Just Play keynote 5.

The Bass clef is also known as the **F clef** as it shows where bass F is **below middle C**. F in music notes is known as being on line 4.

In Just Play this is keynote 4.



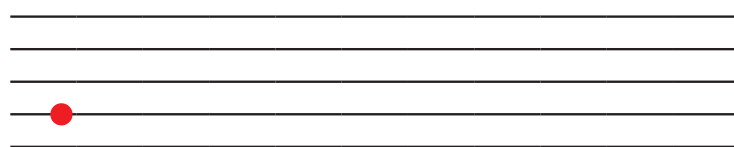
Practice writing



Writing a treble clef can be done in various ways:



Trace the Treble Clef. Start from keynote 5 (line 2). Try keeping your pencil on the paper.



Practice writing



Drawing Bass clefs is easy.



Start with a big dot on **line 4**. Draw half of a heart from the dot.

Make a dot in **space 4**.
Make a dot in **space 3**.

